

This product is an SD memory card equipped with a wireless LAN function.

Inserting this memory card in one of our compatible cameras and connecting with a smartphone, tablet, or other communication device via a wireless LAN enables you to use the following remote control functions.

Remote Capture	Displays the Live View image of the camera on the screen of the communication device, and then enables capturing an image by operating the communication device. Also allows you to change the exposure settings of the camera.
Image View	Displays the images saved on the memory card on the screen of the communication device. Also allows you to import the images to the communication device.
Settings	Enables you to configure settings such as for communication between the camera and the memory card.

**Note**

- Remote Capture is not available when this memory card inserted in a non-compatible camera.

**Memo**

- This guide describes the procedure from inserting this memory card into a camera to establishing a wireless LAN connection with a communication device. For more information on Remote Capture, Image View, and Settings, refer to "User Guide [Operation]" which is available at the following URL: [http://www.ricoh-imaging.co.jp/english/support/download\\_manual.html](http://www.ricoh-imaging.co.jp/english/support/download_manual.html)
- For details on operating the camera, refer to the operating manual for the camera.
- For details on operating the communication device, refer to the user guide and other documents for the device.
- The screen illustrations in this guide are examples. The displayed screens may differ depending on the device.

- This memory card and the devices supporting the card are equipped with a wireless LAN function. Do not use them in a place where electrical products, AV/OA devices, and so on generate magnetic fields and electromagnetic waves.
- If they are affected by magnetic fields and electromagnetic waves, they may not be able to communicate.
- If they are used near a TV or a radio, poor reception or TV screen glitch may occur.
- If there are multiple wireless LAN access points near them and the same channel is used, search operation may not be executed correctly.

In the frequency band used by this memory card, along with industrial, scientific, and medical devices such as a microwave oven, premises radio stations (wireless stations requiring license) and specified low power radio stations (wireless stations not requiring license) for mobile object identification used in factory production lines, etc., and amateur radio stations (wireless stations requiring license) are operated.

- Before using the memory card, confirm that premises radio stations and specified low power radio stations for mobile object identification and amateur radio stations are not operated in the vicinity.
- In the event that the memory card causes harmful radio wave interference to premises radio stations for mobile object identification, immediately change the frequency being used to avoid interference.
- If you have other troubles such that the memory card causes harmful radio wave interference to specified low power radio stations for mobile object identification or to amateur radio stations, contact your nearest service center.

**FCC Compliance and Advisory Statement**

This device complies with Part 15 of the FCC Rules and RSS-Gen of IC Rules. Operation is subject to the following two conditions:

- (1) this device may not cause harmful interference, and
  - (2) this device must accept any interference received, including interference that may cause undesired operation.
- This equipment has been tested and found to comply with the limits for a Class B digital device, according to Part 15 of the FCC rules. These limits are designed to provide reasonable protection against harmful interference in a residential installation. This equipment generates, uses and can radiate radio frequency energy and if not installed and used in accordance with the instructions, may cause harmful interference to radio communications. However, there is no guarantee that interference will not occur in a particular installation. If this equipment does cause harmful interference to radio or television reception, which can be determined by turning the equipment off and on, the user is encouraged to try to correct the interference by one or more of the following measures:

1. Reorient the receiving antenna.
2. Increase the separation between the equipment and receiver.
3. Connect the equipment into an outlet on a circuit different from that to which the receiver is connected.
4. Consult the dealer or an experienced radio/TV technician for help. Any special accessories needed for compliance must be specified in the instruction manual.

**Declaration of Conformity**

This device complies with Part 15 of the FCC Rules. Operation is subject to the following two conditions: (1) This device may not cause harmful interference, and (2) this device must accept any interference received, including interference that may cause undesired operation.

**Caution:**

- Any changes or modifications not expressly approved by the party responsible for compliance could void the user's authority to operate the equipment.
- For product available in the USA/Canada market, only channel 1~11 can be operated. Selection of 20 other channels is not possible.
- This equipment must not be co-located or operated in conjunction with any other antenna or transmitter.

**Warning:**

A shielded-type power cord is required in order to meet FCC emission limits and also to prevent interference to the nearby radio and television reception. It is essential that only the supplied power cord be used. Use only shielded cables to connect I/O devices to this equipment.

**FCC Radiation Exposure Statement**

This equipment complies with FCC radiation exposure limits set forth for uncontrolled equipment and meets the FCC radio frequency (RF) Exposure Guidelines in Supplement C to OET65. This equipment has very low levels of RF energy that it is deemed to comply without testing of specific absorption ratio (SAR).

Hereby, RICOH IMAGING COMPANY, LTD., declares that the O-FC1 is in compliance with the essential requirements and other relevant provisions of Directive 1999/5/EC.

The Declaration of Conformity (DoC) may be consulted at [http://www.ricoh-imaging.co.jp/english/products/ce\\_doc/](http://www.ricoh-imaging.co.jp/english/products/ce_doc/)

**Precautions on Using This Memory Card**

- Do not attempt to use the memory card in a location where the use of wireless LAN devices is restricted or prohibited, such as on airplanes.
- When using the memory card, please observe local laws and regulations governing radio communication.
- The memory card is equipped with a write-protect switch. Setting the switch to LOCK prevents new data from being recorded on the card, the stored data from being deleted, and the card from being formatted by the camera or computer.
- The memory card may be hot when removing the card immediately after using the camera.
- Do not remove the memory card or turn off the power while the card is being accessed. This may cause the data to be lost or the card to be damaged.
- Do not bend the memory card or subject it to violent impact. Keep it away from water and store away from high temperatures.
- Do not remove the memory card while formatting. The card may be damaged and become unusable.
- Data on the memory card may be deleted in the following circumstances. We do not accept any liability for data that is deleted if
  1. the memory card is mishandled by the user.
  2. the memory card is exposed to static electricity or electrical interference.

3. the memory card has not been used for a long time.
  4. the memory card or the battery is removed while the card is being accessed.
- If the memory card is not used for a long time, the data on the card may become unreadable. Be sure to regularly make a backup of important data on a computer.
  - The data on the memory card should be managed at your own risk.

**Trademarks**

Chrome is a trademark or registered trademark of Google Inc. Safari is a trademark of Apple Inc., registered in the U.S. and other countries. All other trademarks are the property of their respective owners.

**Setting up the Camera**

Set up the camera ready to use.

- 1 Insert this memory card into the memory card slot of the camera.**  
If the camera has multiple memory card slots, insert the card in a slot that is compatible with the communication function.

- 2 Turn the camera on.**  
The wireless LAN function icon flashes on the monitor and a communication function recognition process is conducted. When the recognition process is complete, a beeping sound is heard from the card.

- 3 Enable the communication function.**

**Memo**

- It takes several tens of seconds for the camera to recognize the communication function. A recognition process is conducted again when the power is turned off and then back on or when the camera recovers from Auto Power Off mode.

**Note**

- Please note the following when using this memory card with a camera that has multiple memory card slots.
  - If this memory card is inserted in a memory card slot that is not compatible with the communication function, the wireless LAN function is not available.
  - The images of the memory card inserted in a slot that is not compatible with the communication function is not able to be viewed with the Image View function.

**Setting up the Communication Device**

Connect the communication device and this memory card via a wireless LAN.

- 1 Set the wireless LAN (Wi-Fi) function on the communication device to ON and display the setting screen.**
- 2 Select "FLUCARD\_for\_PENTAX" from the list of access points.**
- 3 Enter the security code.**  
The default security code is "12345678."
- 4 Check that the memory card in the camera and the communication device are connected via the wireless LAN.**

**Memo**

- For information on how to change the security code, refer to "User Guide [Operation]".

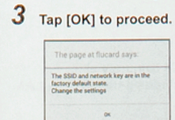
**Starting the Browser**

Use a web browser in order to use the remote control functions (Remote Capture, Image View and Settings). The following browsers are compatible with these functions. (As of September 2013)

- Chrome
- Safari

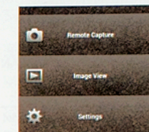
If the functions do not work correctly with your browser, install one of the browsers above on the communication device.

- 1 Start the browser on the communication device.**
- 2 Enter "http://pentax" or "http://192.168.1.1" in the address bar of the browser.**  
A confirmation message appears.



The [Communication Settings] screen appears.

- 4 Tap twice.**  
The menu screen appears.



For details on subsequent operations and the SSID and Network Key settings, refer to the "User Guide [Operation]".

**Main Specifications**

Storage Capacity	16 GB
SD Standards	SD Memory Card Physical Layer Version 4.10
SD Speed Class	Class 10
Wireless Standards	IEEE802.11b/g/n
Security	Open, WPA2
Transmission Method	DSSS (IEEE 802.11b) OFDM (IEEE 802.11g, IEEE 802.11n)
Range (line of sight)	Approx. 7.5 m * Differs depending on the chassis designs of cameras and communication devices. * Measured under our measurement conditions.
Communications Speed	54 Mbps * The speed given is the maximum theoretical value calculated based on the standards and is not an actual measured transmission speed.
Wireless Frequency	2.4 GHz band (channels: Ch 1 to Ch 11)
Connection Method	Card access point mode
Power Consumed	Approx. 1.7 W (max.)
Operating Temperature Range	0~40°C
Size	Approx. 32 mm (L) × 24 mm (W) × 2.1 mm (H)
Weight	Approx. 4 g
Antenna	Built-in type
Buzzer	Built-in type

**Information for Users on Collection and Disposal of Old Equipment and Used Batteries**

- In the European Union  
 These symbols on the products, packaging and/or accompanying documents mean that used electrical and electronic equipment and batteries should not be mixed with general household waste.

Used electrical/electronic equipment and batteries must be treated separately and in accordance with legislation that requires proper treatment, recovery and recycling of these products.

- By disposing of these products correctly you will help ensure that the waste undergoes the necessary treatment, recovery and recycling and thus prevent potential negative effects on the environment and human health which could otherwise arise due to inappropriate waste handling.

If a chemical symbol is added beneath the symbol shown above, in accordance with the Battery Directive, this indicates that a heavy metal (Hg = Mercury, Cd = Cadmium, Pb = Lead) is present in the battery at a concentration above an applicable threshold specified in the Battery Directive.

For more information about collection and recycling of used products, please contact your local authorities, your waste disposal service or the point of sale where you purchased the products.

- In other countries outside the EU

These symbols are only valid in the European Union. If you wish to discard used products, please contact your local authorities or dealer and ask for the correct method of disposal.

For Switzerland: Used electrical/electronic equipment can be returned free of charge to the dealer, even when you don't purchase a new product. Further collection facilities are listed on the home page of [www.swico.ch](http://www.swico.ch) or [www.sens.ch](http://www.sens.ch).